



CROATIAN CRUISE



AUGUST 2022

BOOK **NOW**

ITINERARY

[BOOK NOW](#)



START: SPLIT (AUG 20)

DAY 1: SPLIT-BRAC

DAY 2: HVAR

DAY 3: KORCULA

DAY 4: MLJET

DAY 5: KORCULA

DAY 6: HVAR

DAY 7: SOLTA

END: SPLIT (AUG 27)



8-DAY CROATION BIKE/CRUISE (SUMMER 2022)

DAY	PORT ISLAND	RIDE INFO	HIGHLIGHTS	MEALS
DAY 1 SATURDAY	PUCISCA	Route: Supetar – Pučišća Distance: 25 km / 15.5 miles Climb: 380 m Highest point: 90 m Surface: 100% paved road Difficulty level: 2/5	Head to Split's stunning harbour. Check in / departure at 13:00 followed by lunch on board on a journey to the island of Brač (link). Upon arrival at the port of Supetar, you will cycle the coastal road to the northern part of the island of Brač while spinning along the azure waters and picture-perfect fishing villages of Splitska and Postira. Then arrive at one of the jewels of the Adriatic – Pučišća (population 2000). Free afternoon to explore the village, well-known its traditional stone architecture. Delectable captain's dinner onboard and overnight in Pučišća.	Lunch & Captain's Dinner Included
DAY 2 SUNDAY	LOVISTA	Route: Pokrivenik – Sućuraj Distance: 32 km / 19.8 miles Climb: 450 m Highest point: 350 m Surface: 100% paved road Difficulty level: 3/5	Sunrise sail to one of the Adriatic's largest islands – Hvar (link). Starting point is the small picturesque bay of Pokrivenik. The ride begins with an ascent to the highest point of the route followed by a descent to a village on the eastern point of Hvar island – Sućuraj. Your yacht will be waiting there. After onboard lunch, sail towards the second biggest Croatian peninsula Pelješac and a charming settlement Lovišta. Free night for dinner in Lovišta. Followed by an overnight in port.	Breakfast & Lunch Included
DAY 3 MONDAY	TRSTENIK	Route: Lovišta / Kučišta – Trstenik Distance: 45 km/27.9 miles Climb: 800 m / 580 m Highest point: 411 m Road: 100% paved road Difficulty level: 4/5	Your day three ride is nicknamed wine-o-rama. After onboard breakfast, strike out for the port city of Orebić, a town of seafarers and captains. Spend your first few kilometres ascending and then, naturally, descending with stunning views of the Korčulan archipelago. Then spin through endless valleys of Croatian vineyards. Pass through the final tunnel of Dingač to the south side of a village called Pelješac and continue riding through vineyards to Trstenik. Overnight in picture-perfect Trstenik.	Breakfast & Lunch Included



8-DAY CROATION BIKE/CRUISE (SUMMER 2022)

DAY	PORT - ISLAND	RIDE INFO	HIGHLIGHTS	MEALS
DAY 4 TUESDAY	KORČULA	<p>Route: National park Mljet Distance: 18 km / 11.1 miles Climb: 120 m Highest point: 45 m Surface: 80% paved, 20% macadam road Difficulty level: 1/5</p>	<p>Breakfast cruise from Trstenik to Mljet island, the lush green island also known as “honey island” in Croatian. Mljet (link) is a national park, with two crystal-clear saltwater lakes, lush flora, a rugged coastline, cliffs and numerous islets. The group will cycle around the saltwater lakes, inside which there is another island with the Benedictine monastery from the 12th century. After a spin around the lakes, lunch on board, followed by sailing to Korčula with a swim stop along the way. Free afternoon for exploring the town of Marco Polo. Overnight and free dinner in Korčula.</p>	Breakfast & Lunch Included
DAY 5 WED	VELA LUKA	<p>Route: Korčula - Pupnat - Smokvica - Prižba - Blato - Vela Luka Distance: 53.7 km / 33.3 miles Climb: 750 m Highest point: 340 m Surface: 100% paved road Difficulty level: 4/5</p>	<p>After breakfast, get ready for your longest route to ride the length of Korčula (link) – a beautiful island near Dubrovnik. Ascend to Žrnovo village and then to the oldest settlement on the island - Pupnat, also the highest point of the route. Then descend to the south side of Korčula along one of the most beautiful bays in Croatia. Then spin through countless olive groves and vineyards. Quick stop to taste one of the most famous grape varieties called Pošip. Short mid-route lunch break in the charming village of Smokvica. Then descend to the sea with water stops along one of the island’s most remote beaches. Ascend towards the viewpoint above town Blato and finally descend towards our goal - Vela Luka. Dinner on board and overnight in Vela Luka.</p>	Breakfast, Lunch & Dinner Included

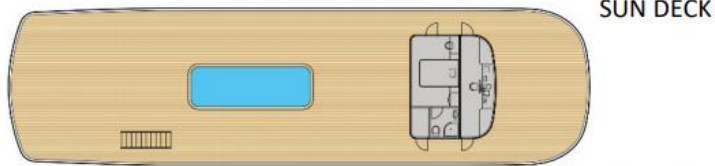
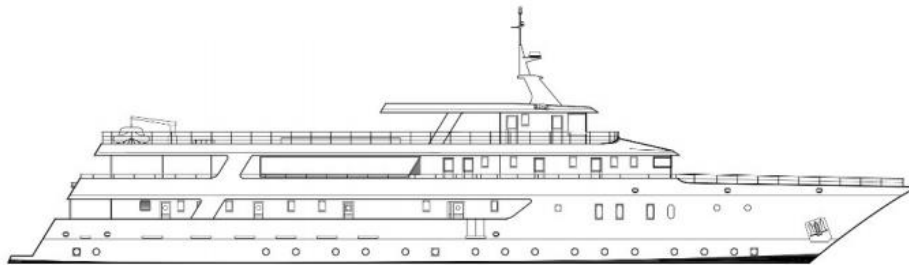


8-DAY CROATION BIKE/CRUISE (SUMMER 2022)

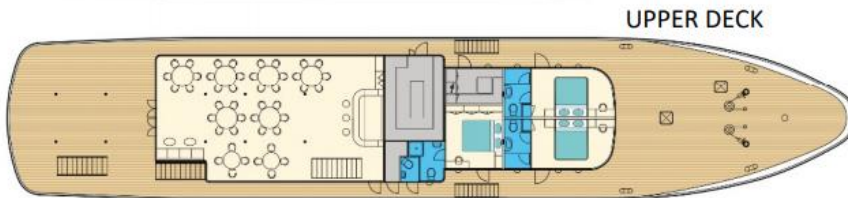
DAY	PORT - ISLAND	RIDE INFO	HIGHLIGHTS	MEALS
DAY 6 THURSDAY	STARI GRAD	Route: Hvar - Stari Grad Distance: 23 km / 14.3 Climb: 450m Highest point: 410m Surface: 100% paved road Difficulty level: 3/5	Early morning sail from Vela Luka to the town of Hvar with breakfast onboard. Short sightseeing tour of Hvar, a fairy tale city featured in the "Game of Thrones" series. Then cycle from Hvar to the other side of the island and our destination for the day: Stari Grad. Bike along lavender fields, not unlike Provence (France). Lunch on board in Stari Grad followed by a relaxed afternoon ride up to two pearls of Hvar - Jelsa and Vrboska. At the summit, ride through Stari Grad Plain seeing the ancient Greek roads and plots which remain to this day. Overnight in Stari Grad with free night for dinner.	Breakfast & Lunch Included
DAY 7 FRIDAY	SPLIT	Route: Stomorska - Maslinica Distance: 36 km / 22.3 Climb: 450 m Highest point: 135 m Surface: 100% paved road Difficulty level: 2/5	Your last day starts with a morning cruise from Stari Grad to the island of Šolta. After breakfast, start cycling from Stomorska to the highest point of the island - Gornje Selo, enjoying the views on both sides of the island and the semi-tropical scents of Mediterranean plants. Continue to Maslinica on the island's western coast. Short stop in Maslinica then and return to Stomorska. Lunch on board followed by return sail to Split. Final send of dinner in Split, overnight on the boat.	Breakfast, Lunch & Dinner Included
DAY 8 SATURDAY	SPLIT	Departure Day	An early breakfast before departure. The perfect holiday!	Breakfast

CABINS

BOOK NOW



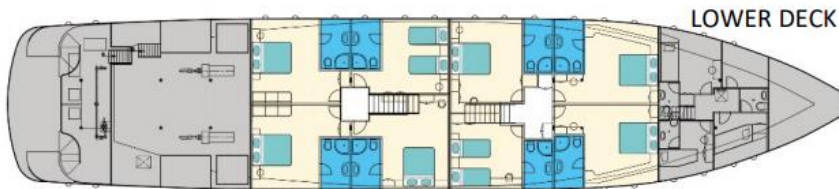
SUN DECK



UPPER DECK



MAIN DECK



LOWER DECK

ALL CABINS HAVE:

AIR CONDITIONING / WIFI /
ENSUITE SHOWER

ALL PRICES DOUBLE OCCUPANCY
TWO (2) GUESTS PER CABIN

\$2689/PERSON

\$2349/PERSON

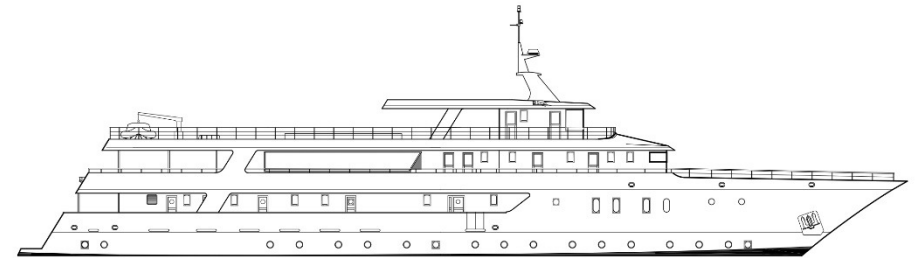
\$1989/PERSON

BOOK NOW

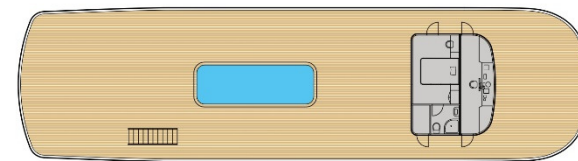


MV MY WAY

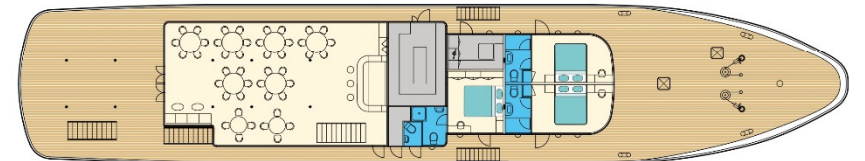
Max. 40 persons



SUN DECK



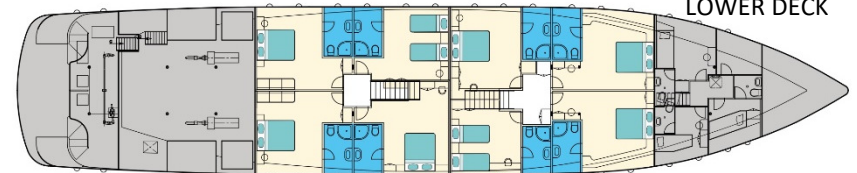
UPPER DECK



MAIN DECK



LOWER DECK



Specifications:

Length	44,45 m
Width	8,15 m
Built	under construction
Sun Deck	200 m ²
Crew members	7/9
Salon on upper deck	
Hot tub	

Cabins:

Total:	21 guest cabins
Upper deck:	3 Double
Main deck:	2 Double / Twin
	4 Double
	2 Twin
	2 Single
Lower deck:	2 Double / Twin
	6 Double

Additional cabin for tour manager



TERMS CONDITIONS & INCLUSIONS

BOOK NOW

PRICE INCLUDES

- 7 NIGHTS / 8 DAYS OF CYCLING/CRUISING
- CABIN (NOTE ALL CABINS DOUBLE OCCUPANCY)
- ALL BREAKFASTS & LUNCHES
- 3 DINNERS
- WATER, TEA & COFFEE
- DAILY ROOM TIDY, MID-CRUISE LINEN CHANGE
- BIKE RENTAL AND GUIDES



NOT INCLUDED

- BEER, WINE, SOFT DRINKS (CASH BAR ON BOAT)
- FLIGHTS/TRANSPORT TO AND FROM SPLIT (CROATIA)
- ACCOMMODATIONS BEFORE AND AFTER THE CRUISE
- CREW TIPS/GRATUITIES (ESTIMATED +\$100-150/GUEST)

PAYMENT TERMS & CONDITIONS

Confirm your cruise via payment of a refundable US\$299/person deposit. Your deposit remains refundable until February 1st, 2022. Final balance payments due April 15th, 2022, and June 15th, 2022. All payments after February 1st, 2022, are non-transferable and non-refundable. We recommend purchasing trip cancellation insurance.